



Notes, Notices, and Warnings

 **NOTE:** A NOTE indicates important information that helps you make better use of your product.

 **WARNING:** A WARNING indicates either potential damage to hardware and/or loss of data and tells you how to avoid the problem.

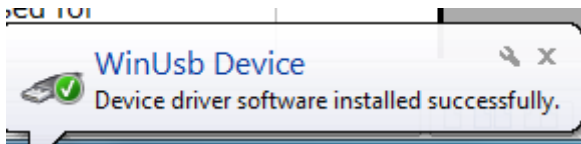
General

Please download the latest **RSTUNER** Windows software and VCI interface firmware from the download section at <http://www.fastchip.nl>

Windows XP 32bit / Vista 32-64bit / Windows 7 32-64bit and Windows 8 32-64bit OS are supported.

Virtual machine, like fusion 2 (<http://www.vmware.com/products/fusion/>) on Mac OS.

Connect your Fastchip VCI interface box with the supplied USB cable to your Windows based PC/Laptop. Windows Vista and higher will automatically install the right hardware driver as long as your PC has an internet connection. This may take up to 1 minute to complete. Please be patient until you see this tray message appear.



[For Windows XP please install the legacy hardware driver through the **RSTUNER** setup]


Install the downloaded **RSTUNER** software to complete software installation.

Now you are ready to connect to your car with the supplied OBD cable. For the OBD socket location of your car, consult the help file included with the software.



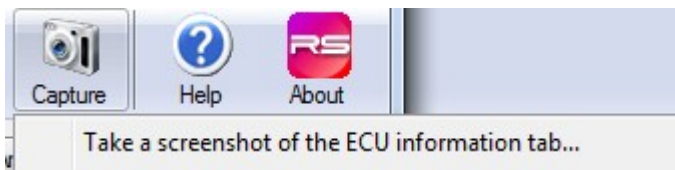
(click on the question mark in **RSTUNER** software for help/manual)

Get familiar with the software first and read the instructions thoroughly before even trying to attempt reprogramming your car. See also section below: [Reprogramming precautions](#)

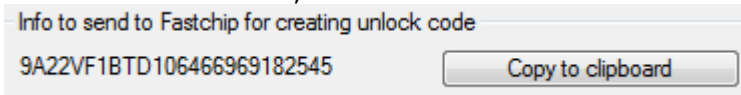
 **Note:** VCI interfaces require an unlock code from us before they can be used for reprogramming.

Please provide us at info@fastchip.nl with:

- Main screen screenshot , that way we can determine the best software for your car. How to make a screenshot: <http://fastchip.nl/manual/#14.2>

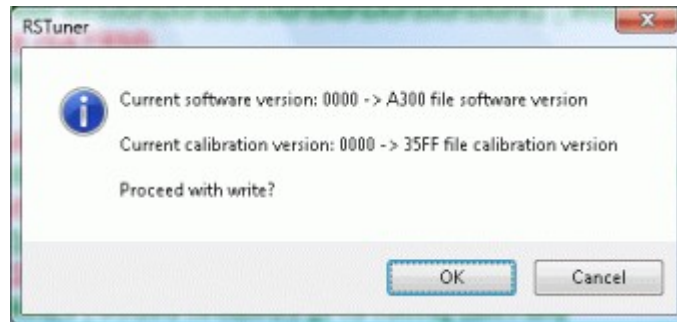


- The VCI unlock code, which can be found under the 'about > unlock VCI' button.



⚠ WARNING: It is absolutely imperative that you choose the correct performance software version for your car. Read section "5.0 Which calibration file to use" of the included help file and make sure you understand its meaning.

RSTUNER software has a unique feature in the form of a "Verify software version dialog" which gives the user the chance to verify the software version he has chosen against the actual version that resides on the ECU before each reprogramming session. Thus avoiding costly mistakes being made.



Verify software version dialog

⚠ WARNING: Programming the wrong software version can inflict permanent damage to the ECU and its sub-systems. Reprogramming the ECU is for your own risk at all times!!

See also section below: [Reprogramming precautions](#)

⚠ WARNING: Regarding the Premium+ VCI unit. AD1-in **input** is converted to a 3.3V power supply **output** for DM-5 gauge support! Only connect the DM-5 gauge 3.3V black/white stripe wire to this terminal. Doing otherwise may inflict permanent damage to the VCI and/or gauge and is NOT covered under warranty by any means.

For the latest software and currently supported models, please visit our website <http://www.fastchip.nl>



Reprogramming precautions

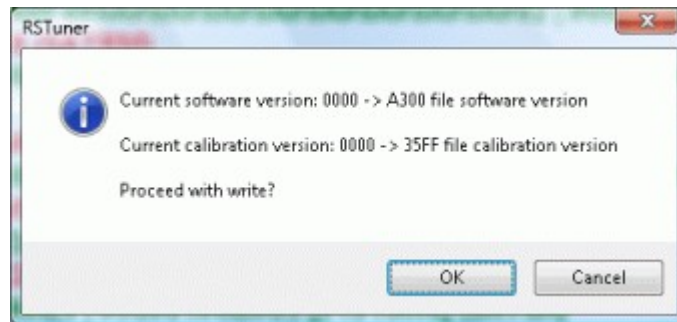
General

Get familiar with the **RSTUNER** software first and read the instructions thoroughly **before** even trying to attempt reprogramming your car. Reprogramming the ECU can take up to 2 - 55 minutes, depending on the ECU in use and size of upload file.

⚠ WARNING: Whenever performing an ECU reprogramming, It is absolutely imperative that you choose the correct software version compatible with the software that already resides on the ECU.

Read section "5.0 Which calibration file to use" of the included help file of **RSTUNER** software and make sure you understand its meaning.

RSTUNER software has an unique feature in the form of a "**Verify software version dialog**" which gives the user the chance to verify the software version he has chosen against the actual version that resides on the ECU **before** each reprogramming session. Thus avoiding costly mistakes being made.



⚠ WARNING: Programming the wrong software version can inflict permanent damage to the ECU and its sub-systems. Reprogramming the ECU is for your own risk at all times !

A 100% battery condition + 10A battery charger are mandatory when performing a full ECU rewrite instead of a partial rewrite.

Before starting reprogramming, completely repair any currently occurring malfunction. Any currently detected DTC (diagnostic trouble code) is erased whenever a reprogramming is performed.

📌 Note: For optimal performance your car must run without any engine fault codes whatsoever.

📌 Note: Once the **RSTUNER** interface is used to reprogram any one ECU, it is automatically registered to that specific vehicle and won't work on any other ECU' s except for diagnostics and data logging.

Laptop/PC

- Laptop preferably connected to mains / full battery
- Disable screen saver
- Set power settings to NEVER turn off hard disk
- Set power settings to NEVER goto stand-by / hibernate mode
- Disable any anti-virus programs
- Shut down as much background running programs as you can. RUN/msconfig/Startup. Reboot PC.

RSTuner interface

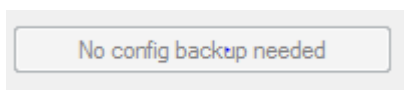
- Keep away mobile phones and other electronic equipment that might interfere with the OBD hardware interface.
- Locate the OBD port on your vehicle and plug the OBD cable into it. ([Annex B](#))
- Check the OBD hardware interface USB cable and OBD cable for proper plug in. The

green light on the interface will come on.

Vehicle

Before reprogramming

- Engine stopped.
- Move the main Cruise control/Speed limiter switch to the rest position. See [\(Annex A\)](#)
- Make sure the vehicle's battery is fully charged and/or attach a suitable 10A battery charger when performing a full ECU rewrite.
- Make sure the ignition is really switched ON, See also included Help "3.0 Connecting to the vehicle".
- Switch off all electrical consumers (lights, interior lights, air conditioning, radio/CD, etc.
- Backup the ECU configuration by pressing the button 'config backup' on the main **RSTUNER** screen when needed. After reprogramming don't forget to restore the configuration backup you made earlier.
Not all ECU types require a 'config backup'



Some diesel engines require an injector codes backup & restore as well.

- Wait for the engine to cool down (engine coolant temperature less than 60°C and air temperature less than 50°C)
- Do not attempt any reprogramming in freezing temperatures!

After reprogramming

- Restore the configuration backup if one was made earlier. In some cases diesel engines require their injector codes restored as well.
- Switch the ignition off and then on again.
- Activate the starter without releasing the key until the engine starts (**the engine start time can be up to 20 seconds**).
- Stop the engine (to initialise the computer) and wait for 30 seconds.
- Switch the ignition back on and reset the Cruise control/Speed limiter function [\(Annex A\)](#) when necessary.

Annex A

Before reprogramming the injection computer, move the main Cruise control/Speed limiter switch to the rest position.

The information about the cruise control or the speed limiter displayed on the instrument panel disappears.

Otherwise, if the main switch remains in the cruise control or speed limiter position during and after reprogramming, the Cruise control/Speed limiter function will not be operational.

The procedure for resetting the Cruise control/Speed limiter function is as follows:

- Vehicle ignition off, lock, then unlock doors.
- Vehicle ignition on.
- Main switch in rest position. (the computer then detects the rest position)
- Switch in Cruise control position to activate the Cruise control function.
- Switch in Speed limiter position to activate the Speed limiter function.
- Activate steering wheel +/- buttons.

Annex B

OBD II Port Location	Also see included RSTUNER help for pictures
Twingo 2	In dashboard glove box
Clio 2	Behind ashtray center console
Clio 3	In the centre console beneath the slot where the key card is inserted, a small panel must be unclipped to reveal it
Megane 1	Behind fusebox cover
Megane 2	Above the centre console, behind a small panel which unclips easily
Megane 3	Above the centre console, behind a small panel which unclips hard. Use small 90 degree bend screwdriver on either side to unclip small panel.
Laguna 2	Behind ashtray center console
Laguna 3	Center console next to aux 12V plug. Remove inner lining to gain access

Fastchip Innovative Car Solutions
Copyright © 2012 Fastchip Innovative Car Solutions

